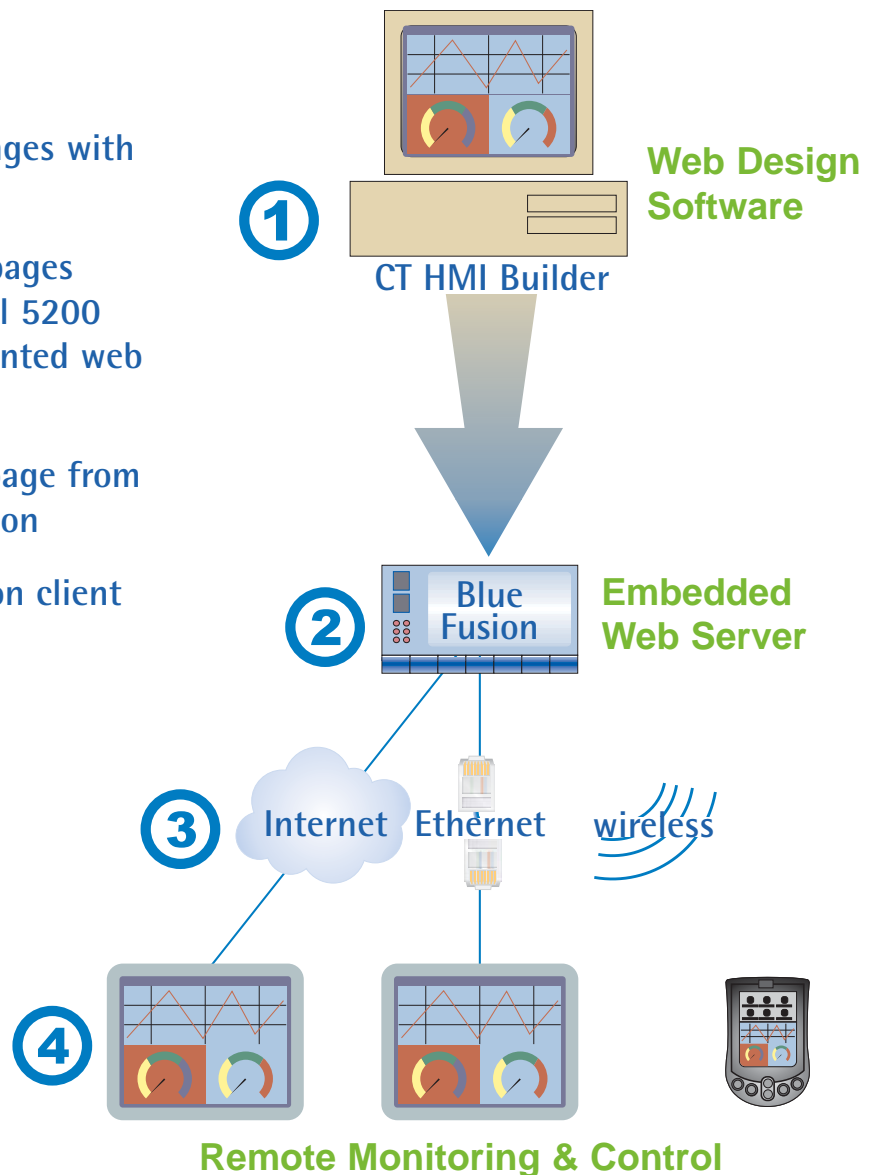


CT HMI™

Bulletin: Export to Web Page

CTC controllers serve web based HMI screens to browser based devices

1. Quickly create interactive web pages with CT HMI Builder software
2. Publish CT HMI projects to web pages residing on a Blue Fusion™ Model 5200 automation controller using patented web server technology
3. Access real-time data as a web page from any network or Internet connection
4. No expensive software required on client devices to monitor or control the applications



Internet access to plant floor data

Now you can have secure, real-time access to plant floor data — from any Internet connection, anywhere in the world. Accessing CT HMI web pages is simple and secure using standard internet browser software.* CTC's patented web server technology enables you to access plant data from virtually any existing computer without additional material costs or system setup. Call up a graphical, online, real-time display of your process just as easily as you would access your bank account or the weather. Because web page access uses familiar browser technology to display data, training costs are also minimized.



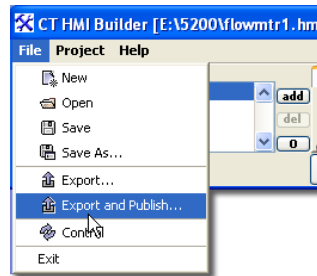
CT HMI enables you to export a CT HMI project as a group of web pages that is accessible from the embedded web server running on a CTC Model 5200 controller. An **Export and Publish** command off the **File** menu provides prompted instructions that automatically publish your CT HMI panels to any 5200 controller on the network. Each panel is saved as a separate web page.

Interactive Remote Control

In addition to remote viewing, CTC's web server technology provides secure remote control capabilities as well. This fully bi-directional interface lets remote users adjust switches and dials; enter data; change recipe settings, and fully interact with the CT HMI project from the remote browser interface. CTC's embedded security features provide the ability to assign different levels of security so that only those users with the proper clearance can "see" or interact with a given object.

Easy, system-prompted export

Exporting a CT HMI project to a Model 5200 Web



Server is accomplished via a menu selection. Simply fill in the prompts for the controller's address, a project name for the web page files, and your controller's password, and your project will be

exported. The project can then be called up on one or more remote devices by simply typing the controller's address/project name into the browser's address bar.

*Internet Explorer v5 or later and JVM (Java Virtual Machine) v1.4.2 required, both available as free downloads. Blue Fusion controller Model BC5222 required as a web server for CT HMI-generated web pages.

© Copyright 2003 - 2004 Control Technology Corp. All Rights Reserved. Printed in USA. Specifications and pricing are subject to change without notice. Volume OEMs contact CTC for custom configurations. CT HMI, WebMon 2 and Blue Fusion are trademarks of Control Technology Corporation. Other trademarks are the properties of their respective companies. Products in this datasheet may be covered by one or more of the following patents owned or licensed by Control Technology Corporation: 5805442; 5975737; 5982362; 6114825; 5997167; 4570217; 4897777; 4969083; 5131092; 5151978; 5159673; 5245704; 5251302; 6061603; 6,201,996. Rev. 072804



Corporate Headquarters
25 South Street
Hopkinton, MA 01748
508.435.9595
888.818.2600
Fax: 508.435.2373
www.ctc-control.com

Wisconsin Office
12308 North Corporate Pkwy.
Mequon, WI 53092
262.243.9595
Fax: 262.243.9521

California Office
4401 Sierra Morena Ave.
Carlsbad, CA 92008
760.434.7234
Fax: 760.730.9212