

# Blue Fusion Series Module Firmware Upgrade Procedure

14

*Note: to upgrade the controller's CPU firmware, refer to [TechNote #12](#).*



Control Technology Corporation, Hopkinton, MA • 800.282.5008 • [www.ctc-control.com](http://www.ctc-control.com)

The following tech tip will assist you in upgrading firmware on various modules installed on Blue Fusion Controllers. **It is very important not to interrupt the upgrade process once it has begun.**

## 1. Save the firmware file to a local directory on your hard drive.

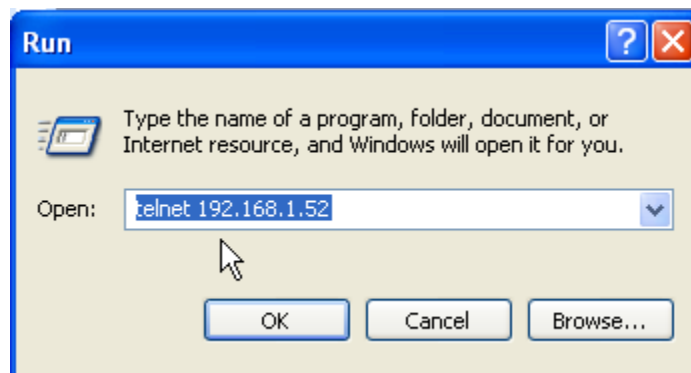
The latest versions of firmware files can be found in the “Download” area of our website: <http://www.ctc-control.com>. Once the file is saved to a local directory on your hard drive continue performing the following steps.

## 2. Copy the new firmware file to the controller

- Stop the program running in the controller.
- Open your internet browser and begin an FTP session with the Blue Fusion controller by typing: [FTP://admin@\[controller's IP Address\]](ftp://admin@[controller's IP Address]). Enter user name and password when prompted. (default user name is “admin”, default password is “BlueFusion”).
- Open the local directory where you saved the new firmware file. Drag and drop the new firmware file to the \\_system\Firmware directory of the controller. Allow ample time for the controller to receive the new firmware file. As the file transfers, status light ST1 will flash.

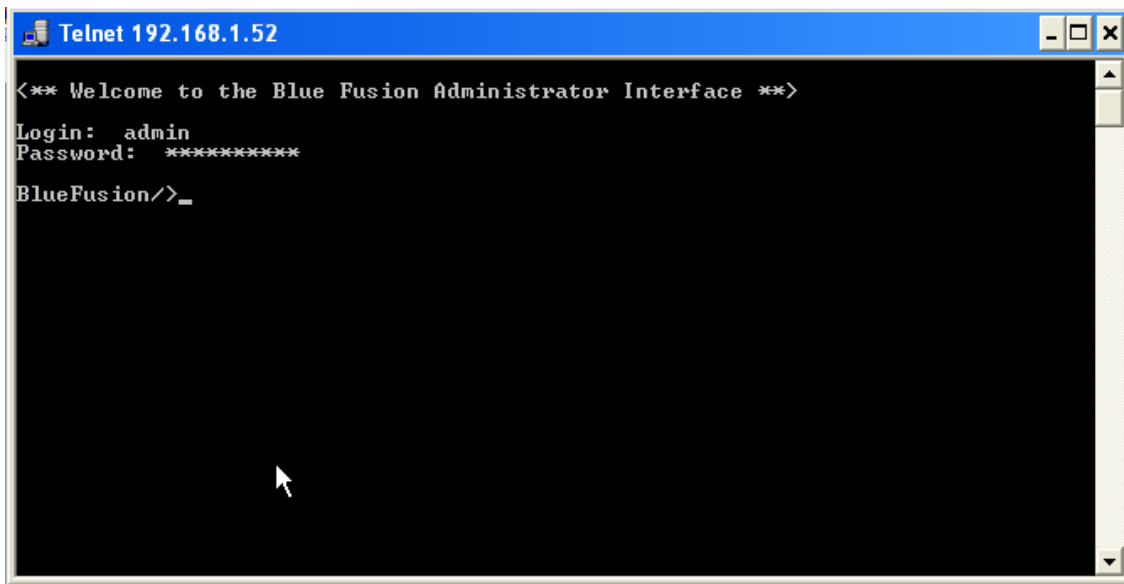
## 3. Update the firmware via Telnet.

- After the new firmware is successfully copied to the controller, you must update the old firmware via a Telnet session: Telnet into the controller by clicking “Start” and selecting “Run”. Enter the command “telnet [controller’s IP address] and click “OK”



*Note:* Keep in mind all Telnet commands are case sensitive.

- After the Telnet command window opens, log in with user name and password when prompted. (Default user name is “admin”, default password is “BlueFusion”)



```
Telnet 192.168.1.52
<*** Welcome to the Blue Fusion Administrator Interface ***>
Login: admin
Password: *****
BlueFusion/>_
```

- At the “BlueFusion” command prompt type the command “cd \_system\Firmware”. This will change the working directory to the “Firmware” directory.

```
Telnet 192.168.1.52
<*** Welcome to the Blue Fusion Administrator Interface ***>
Login: admin
Password: *****
BlueFusion/>cd _system/Firmware
SUCCESS: cd command successful.
BlueFusion/_system/Firmware/>_
```

- Next, type the command “dir”. This will display the contents of the Firmware directory. Type the command “update [filename] where [filename] is the correct file for the module you wish to update, then press “Enter”. The loader version and update progress will appear on the screen.

```
Telnet 12.40.53.52
BlueFusion/>dir
drw-rw-rw-  0 owner group 000256 FEB 14 15:09 _system
drw-rw-rw-  1 owner group 1024256 JAN 01 00:00 RAMDISK
Volume: Capacity - 7864080 Free - 3545760 Deleted - 3030720.

BlueFusion/>cd _system
SUCCESS: cd command successful.

BlueFusion/_system/>cd Firmware
SUCCESS: cd command successful.

BlueFusion/_system/Firmware/>dir
-rw-rw-rw-  0 owner group 438835 AUG 03 08:52 M340AV0106.hex
-rw-rw-rw-  0 owner group 385563 AUG 08 08:16 M340AV0103.hex
Volume: Capacity - 7864080 Free - 3545760 Deleted - 3030720.

BlueFusion/_system/Firmware/>update M340AV0103.hex
M340 Digital Philips Re-Programming:
Philips LPC loader version 1.27
  converted to binary format...
  image size : 137064
Synchronizing. OK
Read bootcode version: 1.65.0
Read part ID: LPC2292, 256 KB ROM / 16 KB SRAM

Sector 0: .....
.....
.....

Sector 1: .....
```

